

TCA Mission: To develop an appreciation of and to preserve an important segment of history – Tinplate Toy Trains –through research, education, community outreach, fellowship, establishment of collecting standards, and to promote the growth and enjoyment of collecting and operating toy, model and scale trains.



Desert Division

DISPATCH

ARIZONA • NEW MEXICO • WEST TEXAS
AUSTRALIA • NEW ZEALAND

Visit our Website: www.tcadd.org



Volume 54, No. 1

Winter 2025

New Year, New Board of Directors, New Editor, Same Great Desert Division!

While Desert Division has seen its share of change over the nearly last 54 years of its history, the one thing that has remained consistent is the incredible level of activity we enjoy here in the Southwest and wonderful friendships that have endured and continue to be formed with our incredible membership. While we get together in the name of a hobby we all share in toy trains, it is the amazing people that keep us moving forward.

A special thanks goes out to Chris Allen for his stewardship in producing the Dispatch on behalf of the Division for the last eight years. We all know how tirelessly Chris works not only on

behalf of the Division, but on behalf of TCA National. It is certainly not a task he decided to pass on easily. As your new editor, I want to not only take the opportunity to thank Chris for his efforts and leadership but also extend the welcome to anyone in the Division that wishes to contribute to this newsletter. Your feedback, your articles for publication, your flyers, or your items for the buy-sell page are most welcome. As a digital publication, the pages are not limited as they were in the days of snail mail. Please send your submissions to jonathanpeiffer@live.com and the information will be published in a timely manner.

MARK YOUR CALENDAR – UPCOMING EVENTS

February 1st – Souper Bowl XII Auction

February 8 – February Division Meet

8:30 AM member only swap – 10:00 AM Business Meeting – PVUMC – Paradise Valley, AZ

February 22nd - Rio Grande Swap meet

9:00 AM – 2:00 PM – Netherwood Church, Albuquerque, NM

March 8 – March Division Meet

8:30 AM member only swap – 10:00 AM Business Meeting – PVUMC – Paradise Valley, AZ

Much has happened since the last issue of "The Dispatch" was published. To close out 2024, Desert Division had a lively auction in November that consisted of over 300 lots of trains representing all the major eras of collecting. As always, our auctioneer Peter Atonna kept the pace as we moved through the lots while our auction committee members got in their many steps transporting the lots around the auction hall. The next Division auction is coming up very soon on February 1st and there are some items in this auction including a 1950 773 Hudson and a complete postwar Congressional set with the original boxes and the correct GG1. This is one not to be missed by the postwar collector.

As many already know it was decided by Division leadership to cancel the November swap meet. With only half the hall sold with just a week until the show, this was not an easy decision for the Division to make. This in no way means that the show will be cancelled for 2025 and be sure that Desert Division is doing everything to find the right venue to continue a long Division tradition. The Division is currently seeking a space that can host somewhere between 80-100 tables.

The Division closed out December with another excellent holiday party held at the Elks Lodge in north Phoenix. Mark & Linda Thompson once again outdid themselves in helping provide a venue and in the preparation of an excellent holiday meal with their team. Peter put his auctioneer skills to the test to raffle off the tabletop items and the Division was able to return some revenue to the club. One of the highlights of the Holiday Party is the announcement of the winner of the Hudson raffle. This year, Gordon & Christie Wilson were the lucky winners and are now the proud owners of a 773 Hudson again!

While it is only the end of January, it is not too early to think about the 2025 party. Desert Division is seeking some new leadership for this annual event. If you have an interest in event planning, please talk to a Division Director or the current chairs, Chris & Laurel Allen and they would be happy to assist you in continuing to make this a wonderful event.

The January meet was well attended with over 30 members in attendance. President Mike Dietrich opened the meeting with our official annual business meeting. Secretary Angleo Lautazi announced that our current membership is at 190 members with 73 of those members part of the Rio Grande Chapter. Treasurer Mark Thompson followed up with a report on Division finances. The checking account had \$10,822.64, the savings account \$498.65, the PayPal account \$2,207.27, the eBay account with \$1,611.00, and finally the Wells Fargo account with \$21,053.00. In other business, John Zaval announced that he would be resigning from his position as Division Director. Russ Howry volunteered to fill the vacant position and was appointed by the Board of Director and we thank John for his service in Division leadership.

In old business, it was announced that the GCMR will be holding their Cactus Train Meet on February 15th. See the flyer in this newsletter for details. It was announced that while the Hudson Raffle would continue in 2025, the Division is seeking feedback for a possible replacement of a different item for 2026. Please offer suggestions. Those who have been in the Division for any length of time know this conversation has come up many times in the past and has resulted in coming back to the 773 Hudson as raffle of choice.

New business included discussion on the February auction on February 1st in the Fellowship Hall at Paradise Valley United Methodist Church. There was a sample of the new Division Atlas Hopper for display. At the time of the meeting, the cars were stuck in the snow in Kansas City. Currently, the cars have been delivered and will be available at the February Meet. The Spring Picnic is scheduled for April 12 at the Railroad Park. This is in place of the regular Division meet.

Chris Allen started a discussion on the future of the Division's layout trailer. He explained that we are paying \$2,800 a year to store it but only using it once a year. He proposed that the Division consider offer donating the trailer to the Grand Canyon Model Railroaders in

(Continued on Page 9)

DECEMBER 2024 DESERT DIVISION HOLIDAY PARTY



Dave Brown and Chris Allen Pausing Their Conversation for a Pose



Our New Room at the Elks Lodge Full of People Celebrating



President Mike Dietrich Sells Another Hudson Raffle Ticket Sale to Irene Wasserman



Division Treasurer and Master Chef Mark Thompson Preparing the Perfect Prime Rib



Michelle Dietrich and John Huber Enjoying Some Red Wine Provided by Desert Division



How Many Times in Division History Have the Wilsons Won a Hudson?

JANUARY 11, 2025 DESERT DIVISION MEET



A Nice Turnout of the Membership for the January Meeting



Paul Wasserman Discussing Lionel's First Postwar Trainset



John Zaval Congratulates Russ Howry on his Appointment to the Division BOD



Jonathan Peiffer Finds New Ways to Bore the Membership with Prototype Minutia



President Mike Dietrich Formally Presents Christie Wilson with the 2024 Hudson



Tim Halchuck Discussing his Process for Customizing Lionel Trains

MINUTES JANUARY 8TH, 2025 TCADD BOARD MEETING AT THE ELKS LODGE

In attendance: Mike Dietrich, Mark Thompson, John Zaval, Paul Wassermann, Terry Haas, Chris Allen and Angelo Lautazi. On the phone: Art Lites.

The meeting was called to order at 7:01 PM.

Minutes: The Desert Division has 116 members and the Rio Grande Chapter has 73. Division total is 189.

Treasurer's Report: Checking \$10,822.64, Savings \$498.65, Paypal \$2,027.27, Ebay Acct \$1,611.00 and Wells Fargo \$21,053.00.

Old Business - Recap

- Holiday Party was well attended and very successful. The party generated a profit of \$54.00 which was a surprise. We will need to decide on a date for this year.

New / Ongoing Business

- The Souper Bowl auction will be on Feb 1, 2025 at the PVUMC in the Fellowship Hall. Mike will ask for volunteers to bring a soup, and Chris will ask for auction helpers.
- Atlas has shipped our cars and should arrive this Friday at Peter's.
- The Spring Picnic has been scheduled for Sat. April 12, 2025, at the Railroad Park. The Picnic will replace the regular meet. Mark and Angelo agreed to cook.
- The Train Show for 2025 needs to find a location and date. Terry has been checking Mesa locations.
- Chris asked to propose a possible club action. To sum up the discussion: The Desert Division's layout trailer is not being used very much and the GCMR club has a trailer that requires repair. The proposal is to trade our trailer for one of their Dates at the Baptist church for a Train show. After a lengthy discussion the Board decided to back this proposal. Mike will bring this to the membership and get their consensus.
- BOD Luncheon: Mike suggested a Sunday Mar 30th at the Bottega restaurant.
- 2025 Roster: will remind the membership that we have gone digital with the roster and no longer use the membership cards.
- Elections: John Zaval will announce at the meeting that he is resigning his position as Director. Mike will ask at the meeting if someone will volunteer for the position.
- Chris reminded Mike what was needed to complete the Annual Business Meeting this Saturday.
- Mark asked for a decision on the Hudson Raffle for 2025. If we continue the raffle we need to buy another Hudson. He reminded the board that we are limited to an outlay of \$699.00. Chris volunteered to sell the club his Hudson for this year. The Club agreed to hold the raffle for this year but we will need to decide on next year.
- Board meetings will be held at the Elk's Lodge or a member's home. This will be a flexible decision.

The Board meeting was adjourned at 8:12 PM.

The next Board Meeting on Wednesday, February 5th at the Elk's Lodge.

Minutes submitted by: Secretary, Angelo Lautazi

PRESIDENT'S MESSAGE

Dear Friends,

What will you score at the Soup-er Bowl Auction? It's time for the big game and the even bigger auction.

While the "game that shall not be mentioned" is in the *Big Easy* this year so it should be *easy* to score a few awesome trains. I'd like to highlight a few amazing events in the valley in February. Despite being the month that was shorted a day or two, we have the golf tournament and pitchers and catchers reporting are all keeping us busy. The Desert Division is also busy this time of year as we are back to our regular meeting and the highly anticipated Souper-bowl auction. I'd encourage you to check out the auction page for the listing of some incredible items in this auction. There is something for everyone in this offering and as always, there is no buyer's premium and bargains a plenty.

It's dues season and I hope you will take the time to renew both your TCA and Desert Division (\$15/year and you can pay up to 5 years in advance) dues. The Board works tirelessly to make sure you receive maximum value for your membership. This year we are redoubling our efforts to continue to offer auctions, a fantastic Train Show/Meet, a picnic, and a fun Holiday Party. As we did last year, we will make all these events "can't miss". If you're reading this newsletter, it's the season of *love* so we would *love* for you to attend our meetings, the picnic, an auction, the Train Show and the Holiday Party. Showing up to these events can help rekindle the friendships and the spark of why you joined the hobby. The Division is not about trains, it's about people.

Ear to the rail:

February 1st Souper-Bowl Auction, many different soups will be offered as we sell fantastic trains! This is in the fellowship center at the PVUMC. See the website for details.

February 8th Regular meeting and member sales tables

March 8th Regular meeting and member sales tables

April 12th NO regular meeting, join us for the Annual tri-club picnic at the McCormick-Stillman Railroad Park

As I will close each newsletter, I hope to welcome you to one of our events or meetings and I'd like to add two more "C's" to the Chamber of Commerce slogan: Collecting and Camaraderie, as the latter is what keeps us going!

February's education segment: What train has touched your heart?



DESERT DIVISION BOARD OF DIRECTORS 2022-2024

President:	Mike Dietrich	623-572-3538	Directors:	Art Lites	505-463-1951
Vice-President:	John Craft	480-785-2432		Terry Haas	480-827-8604
Secretary:	Angelo Lautazi	480-580-5950		Russ Howry	864-419-9354
Treasurer:	Mark Thompson	307-631-4474		Paul Wassermann	480-949-1620

RIO GRANDE CHAPTER PHOTOS

Courtesy of Tony Porizio, Rio Grande Chapter "Info Depot" Editor

it res o hristm s st



i s i e the Mi ht se — hristm s



Everett's Holiday Layout



hristm s Meet



hristm s Meet

Module Running at Christmas!

The Module Crew was back for another holiday train run at St. John XXIII RC Church in the Northeast Heights. This is the second time the modules spent the holiday there and it may be a new tradition for the Chapter. Before and after several church services, the parishioners are entertained with the usual mix of railroad realism and toy train whimsy. Thomas The Tank Engine showed up right next to The Super Chief. And of course, it wouldn't be Christmas without the Polar Express. And the train from Strasburg shared the road with a Pennsylvania GG-1 hauling a consist of Hershey candy cars! Hope you can join us next Christmas!



Tim Whalen's Christmas Layout Gets a Second Life and Finds a New Home



RIO GRANDE NEWS

2024 has been a very successful for the Rio Grande Chapter and I think we should be very proud of what the club has accomplished this year. Thanks to the help of the Chapter members, we have gone a long way to making New Mexico aware of the toy train hobby, its history, and operating capabilities.

Our first major accomplishment was a \$500 donation to the Wheels Museum. With that money we were able to build an extension to the museum's large O scale layout. That extension held two S gauge tracks and scenery. Total length of both tracks was 280 feet. This project took months and many man hours. It was headed by our own Chris Wieclaw with help from several members including George Domeny, Bob Galler, Scott Eckstein, Bob Schmidt and others. I know I may have missed names and I apologize in advance.

At the same time the club absorbed the New Mexico Division of the TTOS. As you may know the TTOS National closed their doors December 31st 2023. We welcomed about 20 members of their division and processed those new TCA members into our ever-growing club. Our current membership stands at 70. Up from about 45 last year at this time.

Our second accomplishment was a community outreach in March. We had a multiple gauge show at the Raymond B. Sanchez Community Center. Those that helped had a great time and we were able to add two new members. This was followed an outing to explore the abandoned Bernalillo Railroad. We are grateful to Pete Gerity who researched and organized the outing. We will plan to do another field trip this year.

Marching on last year, we held our annual picnic hosted by Chris Wieclaw. Chris has an amazing layout and the food was some of the best BBQ I have eaten. Again, the cost was covered by your club. After a break for the summer, we co-hosted the Socorro meet in August then in October we had a successful October Meet. During the year, we continued to raise money thru the Polar Express raffle which keeps our meets going and assists our efforts to recruit members.

The year ended with two activities. First was the Rails Across the Rio Grande with the module group and Jon Spargo showcasing toy trains. We added two new members at that event. Next was the December swap meet. It was a big success with an attendance of approximately 160 paid attendees and the addition of a new member. After the meeting, we had the traditional Pot Luck with the Chinese raffle. Some outstanding prizes were available. I would estimate several thousand dollars of donations were given away. Prizes were attractive for both collectors and spouses. Get your share and plan to attend with your guest next year.

Finally, I have an appeal to all of you. We have had a successful year adding 40 new members. However, with many new members and larger meets comes the need for more help to continue these activities. I am not asking for many hours of your time but a couple of hours in helping at meets or during our outreach to the community. Seeing smiles on faces when we run trains or talking with the public about the hobby is a reward of its own. If you are not assisting in these activities, please consider volunteering. You can e-mail or call me about club participation.

Art Lites 97-44623

President, Rio Grande Chapter



**More Photos of Tim Whalen's old Christmas Layout
Made New**

(Continued from Page 2)

return for their fall train show date at the North Phoenix Baptist Church. While this was not an immediate action item, a lengthy discussion was had on the subject and pending further discussion with GCMR, a formal proposal on disposition of the trailer may be forth coming for a formal vote.

In the educational segment Paul Wasserman discussed his December 1945 Lionel train set which was the first set Lionel offered after WWII and how it was rushed into production. He went into detail on how Lionel introduced their first knuckle coupler with this set and the speculation that it may have been worked on during war time restrictions. He also showed off many graphic errors in the set that now make it a very desirable set to own. Jonathan Peiffer discussed variations of various brass models of the ubiquitous PRR X-29 boxcar. The Pennsylvania Railroad built over 30,000 of these cars which was more than some railroad's entire fleet of cars. He also brought a Weaver sale O 80' "American Flyer" car and its S scale American Flyer counterpart. Chris Campbell discussed the latest offering from Ready Made Trains (RMT) and focused on the build quality and value over

comparative cars from other brands. Terry Haas displayed some photos of his latest open house that had over 400 visitors over the Holidays. Finally, Tim Halchuck displayed and discussed several of his custom projects including a Lionel 773 modified to match a 700E, a repainted Alco FA, and several repainted boxcars. All his items showed a high level of skill and craftsmanship.

Raffle winners included the following:

- Jonathan Peiffer: Atlas Wabash Hopper
- Dan Turner: K-Line Log Flatcar
- Dave Brown: Lionel GN Reefer
- Bill Harris: Weaver Wabash Hopper
- Jon Hinderer: Industrial Rail American Refrigerator Car
- Terry Hass: MTH Blue Bell Reefer

The meeting was adjourned at 11:34. The next regular Division meet will be held on February 8th at Paradise Valley Community Church. Be sure to attend as 2025 Hudson raffle tickets will be available for the first time this year and your chances of winning a fresh \$100 bill are the highest. Also see the President's message and bring a train that "has touched your heart" to share with everyone in the spirit of the season!

More 2024 Desert Division Holiday Party Photos



DIVISION DUES ARE DUE BY FEBRUARY 28

Long gone are the days of rent-free space to hold our meetings. We hold eight monthly meetings each year and switched to a smaller meeting room to reduce our expenses without giving up meeting in a nice secure location with clean restroom facilities. But, like everything else in our lives, that rent went up last year.

Your Division dues help to offset that rental cost and we can still provide free sales tables to any member that wishes to sell at our monthly meeting.

Desert Division dues are \$15 per year and you may pay up to five years in advance if you desire. Members who owe dues and receive this newsletter electronically have already received a dues reminder. If you get your newsletter via snail mail look at your label. These labels get updated monthly from the secretary.

HAVE YOU MOVED, CHANGED YOUR PHONE NUMBER, OR HAVE A NEW EMAIL ADDRESS?

Please ensure that we have all your personal information including phone numbers and email address correct.

Rio Grande Chapter members mail your dues to Chapter Treasurer Everett Hagan; 421 Longwood Dr. Rio Rancho, NM 87124 or pay at the Chapter Meet. **Division members in Arizona** you may mail your dues to Angelo Lautazi, Division Secretary, at 6109 E. Sonoran Trail, Scottsdale, AZ 85266 on or before February 28, 2022. You may also save yourself postage if you wish to bring it to the January Meet or the Souper Bowl Auction.

All dues need to be paid in full by February 28, 2023.

SOUPER BOWL IX AUCTION – SATURDAY FEBRUARY 1

We welcome you to the return of the member hosted **SOUPER BOWL TOY TRAIN AUCTION**.

Without a doubt one of the tastiest and most looked forward to auction lunches in all of TCAdom is only available here in Desert Division.

For your half time entertainment and culinary pleasure we present some of the best home cooked soups and chili you have tasted. Bragging rights go to the members who go home with empty crockpots.

Year after year our chefs plan for this day. Some bring family secret recipes, while others like to experiment and bring something different each year trying to woo your taste buds away from long time crowd pleasers to something new and exciting.

The Division will provide certified gluten free chili and all the utensils, bowls, crackers, rolls, and plenty of napkins. But that's it. It's up to you, our member chef's extraordinaire, to bring in your crockpot full of deliciousness.

You can preview the catalog on our website <http://tcadd.org/auctions.html> but don't forget to stop by for the best tasting auction in TCA.

No Buyers Premium, over 300 lot auction, Peter Atonna's humor and a great homemade lunch. What more do you need to kick off 2025 Desert Division style?

MORE LIGHTING IS BETTER

by Peter Atonna

As some know, we are horse and carriage people in addition to train people (well me, anyway). So, over the years we have collected Budweiser items to celebrate their Clydesdale hitch. (We have actually been to their "farm" in St Louis and saw their barns, etc)

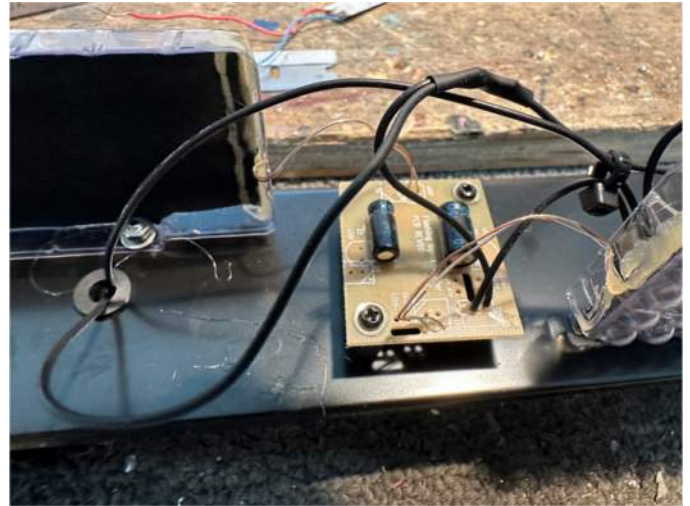
A couple of years ago, at our auction there was a Lionel GP labelled "Budweiser". Good idea, use it to build a Bud train, but with cars showing the Clydesdale hitch. And over the years I've collected a couple of cars. Then in this year's catalog there were two: a Clydesdale hitch in a winter scene and another with a "lighted" Bud sign. No horses, but the classic bar sign (which we have here too!)

The lighted car arrived, and when put on the track it did light, but a real dim light so it was hard to tell in daylight that it was on. So, a project. Open it up and see what they used to light it.

It turns out each backlight panel had only a few tiny 3v led bulbs tied to a 3v voltage regulator. It was very intricate and well done. It is a shame they used such low voltage bulbs.

My plan was to remove all of Lionel's lighting package and replace it with a set of 12v strip LED's, two in each panel. Fortunately, I stock Henning's 12v constant lighting boards as all my old passenger cars get new lighting.

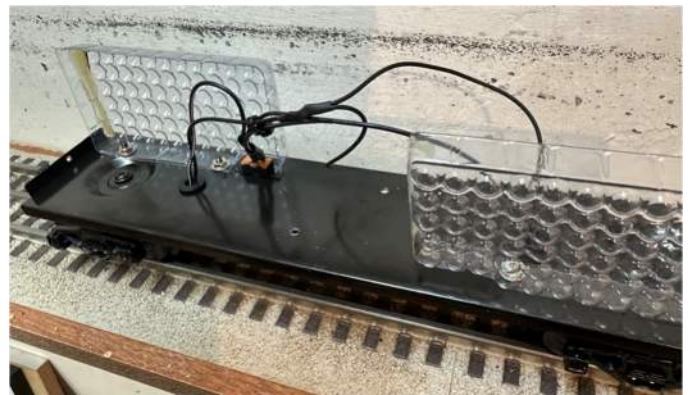
Here is the sequence of the upgrade and the new board. (it is clearly better in daylight but jumps out at night).



The original board



3v bulbs



With new lighting



Aglow



As it came

GREENBERG'S GUIDE TO LIONEL TRAINS, O GAUGE, VOLUME 3: 1937-1942

By Jim Koontz 99-49001

What an achievement. Dr. Greenberg has spent the last 12 years creating four elaborate volumes covering Lionel prewar "O" and Standard gauge trains through all years of production. He has spent thousands of hours working with hundreds of collectors to produce tens of thousands of pictures. Volume 3, the final O-Gauge volume is now available. I recommend you purchase it. If you do not have Volumes 1 and 2 as well as *his 2014 Guide to Standard and 2 & 7/8 Gauges*, I recommend you obtain all four. You will enjoy our hobby more and make more informed purchases. These are going to be the permanent core reference books for all current and future collectors. Don't be the person scrounging for them on-line when they are all sold. As with the previous books, the pages of Volume 3 are visually attractive and compelling reading. The amount of detail is impressive.

Chapters 1 and 2 explain why Lionel changed their products from toy-like to realistic in appearance and operation and how advances in casting technology and the introduction of polymers for injection molding made it possible. Jim Kinder's list of items made from polymers is interesting. Many detailed pictures of couplers, underside stampings, motors, pickup plates, trucks, and sealing tapes answer so many questions of how, why and when. The discussions and accompanying pictures of the Ives and Lionel reverse units and the amazing whistle are the best I have seen.

Chapters 3 —7 review Lionel's use of their multiple new realistic engines in passenger and freight cataloged and promotional sets. Dave McEntarfer, Jim Kinder and Bruce Young list of sets with detailed contents in Chapters 3 – 7 are immensely helpful. These sets demonstrate how Lionel used their colorful toy-like cars with the new realistic engines. Dr. Greenberg shows how features were combined or omitted to make sets available at all price points to meet the demands of the local hobby shops as well as the national

retailers. The report on the 1940 905-B outfit that was sold without cars or track is an extreme example of pricing efficiency.

Chapter 8 describes the large and elaborate Hudsons and how Lionel overcame early casting issues to produce some of their finest locomotives. Christopher DiCianna's history of the evolution of the zinc alloy, Zamak, made by New Jersey Zinc Inc. from 1922 into the 1960s reveals the constant struggle to combat Zinc-Pest and produce products with fine detail. Zinc-Pest probably damaged the majority of the 1937 production of Hudsons. Many fine freight sets with 700 series engines are pictured. In 1941 Lionel finally replaced the Hiawatha based Rail Chief cars with the all-new Manhattan coaches specifically for the 700 series.

"Switchers made easy" could be the title of Chapter 9. If you have ever tried to sort out the seemingly endless number of switchers and their outfits, you will appreciate Rob English's fine charts solving that problem.

The promotional streamliner made attractive low-priced outfits nicely pictured in Chapter 10. These quite popular sets are generally available today.

Chapters 11, 12 and 13 start with the smaller 4- and 8-wheel freights. These cars are often overlooked because of their size and low value. They are, however, quite attractive and can be an inexpensive way to ease into collecting. The larger 800 and 2800 freights are my personal favorites because I inherited many as a child and played with them for years. Extensive pictures and detailed charts present them well. The pictures and description of the merchandise car got my immediate attention. Wow.

Chapter 14 expands some on the Chapter 8 descriptions of scale, scale detailed, and semi-scale freight cars.

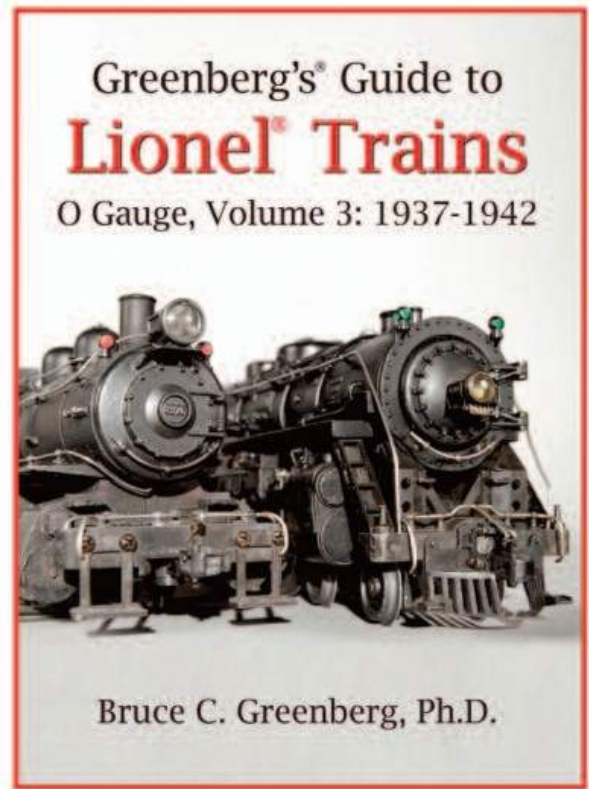
Chapters 15, 16 and 17 cover the popular and colorful passenger cars used in endless sets. This is, again, an example of mostly inexpensive

and available items that are a great way to start a collection. The charts are helpful.

The rest of the book features the many lithographed cars that were sold from 1931-1942. There is a good discussion of Ives and the transition to Lionel-Ives and finally the dropping of the Ives name. A once proud name was eliminated from the manufacture of toy trains.

These informative books are enjoyable to peruse from cover to cover as I have done or to look up an item of current interest. Just looking at the pictures is fun. I recommend you spend enough time to understand how they interconnect. With a little effort, they will be your most useful resource on Lionel's wonderful prewar trains.

Volume 3 is available from Greenberg's website: brinkmannpub.com or by phone at 571-723-2333. The book is \$110 plus \$7 shipping.

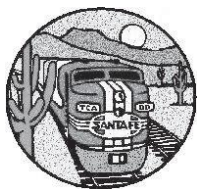


Peter Atonna Recreates a Unique Amtrak Moment

by Jonathan Peiffer

Peter knows how much I enjoy 1:1 railroading, especially Amtrak as I largely grew up in the Amtrak era and have ridden many of their trains going back as far as the mid 1970's when I was just eight years old. On January 26th, Peter captured this webcam image of the Southwest Chief stopping in Flagstaff, AZ with a Genesis P42 leading trailed by a GE Dash-8. With the P42s starting to see retirements with the new Chargers coming online, seeing a 1991 vintage Dash-8 in service is truly a rare animal! I remember riding the Chief when the Dash-8s were new but now they are largely relegated to protection service when the assigned motive power failed enroute. Peter, the ever-creative modeler decided to recreate this scene on his layout at 1:48. While Peter's scene is located in Douglas, AZ, it could easily be Flagstaff. One of the many reasons to love this hobby!





Desert Division Membership Form



Last Name: _____ First Name: _____ Spouse's Name: _____ TCA No. _____

Address: _____ Home Phone: _____

City: _____ State: _____ Zip: _____ Cell Phone: _____

E-mail Address: _____ Date of Birth: _____

Dues are \$15.00 per year. (Members may pay up to 5 years in advance). No. of Yrs. X \$15.00=

A Desert Division Badge is \$18.00 (optional):

The Desert Division Newsletter,

If you want a Hardcopy of the Newsletter, it will cost \$10.00 a year. No. of Years: X \$10.00=

Make your check payable to: **TCA - Desert Division**

Total \$=

Mail your check to the Division Secretary:

Angelo Lautazi, Div. Secretary 6109 E Sonoran Trl Scottsdale, AZ 85266

Member or Applicant's Signature

Date

Please Indicate Your Hobby Preferences from the Categories Below. Check All that Apply.

TRAIN ERA

- ☐ 1. Pre-war (1850-1942)
- ☐ 2. Pre-war (1945-1969)
- ☐ 3. Pre-war (1970-present)

GAUGE

- ☐ 4. Scale / NMRA
- ☐ 5 Standard
- ☐ 6. G or #1
- ☐ 7. O or O27 Tinplate
- ☐ 8. S
- ☐ 9. HO
- ☐ 10. OO
- ☐ 11. N
- ☐ 12. Z
- ☐ 13. Live Steam

MANUFACTURER

- ☐ 14. American Flyer
- ☐ 15. Lionel
- ☐ 16. Marx/Mars/Allstate
- ☐ 17. Ives
- ☐ 18. Dorfan/Fandor
- ☐ 19. MTH
- ☐ 20. Williams
- ☐ 21. K-line
- ☐ 22. AMT/Kusan
- ☐ 23. Other-please specify _____
- ☐ 23A. Basset/Lowke
- ☐ 23B. Bing
- ☐ 23C. Boucher
- ☐ 23D. Bub/Karl

- ☐ 23E. Buddy-L
- ☐ 23F. Carlisle/Finch
- ☐ 23G. Elletren
- ☐ 23H. Hafner
- ☐ 23I. Hoge
- ☐ 23J. Hornby
- ☐ 23K. Issmayer
- ☐ 23L. LGB
- ☐ 23M. Marklin
- ☐ 23Q. Plasticville
- ☐ 23R. Littletown/Skyline
- ☐ 23S. Pride Lines
- ☐ 23T. REA/Aristo-Craft
- ☐ 23W. Voltamp
- ☐ 23X. Weaver
- ☐ 23Y. McCoy

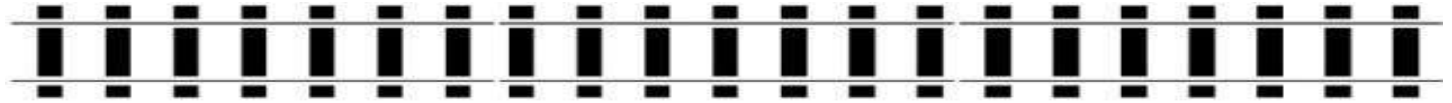
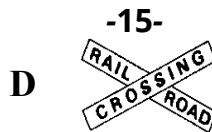
- ☐ 23AA. USA Trains
- ☐ 23BB. S-Helper Service
- ☐ 23DD. Fleishmann
- ☐ 23EE. Carette
- ☐ 23FF. Eastwood Auto
- ☐ 23GG. Amer.Model S Ga.
- ☐ 23II. Colber
- ☐ 23LL Bowser

PERIPHERALS

- ☐ 26. Figures/Vehicles
- ☐ 27. Toys
- ☐ 28. Paper/Books
- ☐ 29. Buildings
- ☐ 30. Railroadiana

Do You Have a Layout?

☐ 24. YES ☐ 25. NO



ARENELL SERVICE & REPAIR - FACTORY AUTHORIZED MTH AND LIONEL SERVICE.....1825 E. LAUREL ST. MESA AZ 85203. CALL RAY 602-565-6603 FOR SERVICE APPOINTMENT. ARENELL@AOL.COM TCA#97-45797 Repairs on Postwar Lionel, MPC, LTI as well as MTH "O" Gauge and "G" Gauge. Certified MTH upgrade center Discounts to members of all local clubs. I pay cash for train collections old or new, large or small. VISA & M/C

BUILDING A LAYOUT? – We can furnish all GarGraves products at discount prices. Flex and sectional track, uncoupling tracks, and accessories in all gauges; the new 072 and 100" and 042 switches; DZ1000, Rix, and Tortoise switch motors, Acme controls, NJ signals, and the new Z Stuff optical crossings. For a list, contact Peter Atonna 928-636-4228 or e-mail at mjatonna@gmail.com

ARIZONA TOY TRAIN REPAIR – WE HAVE MOVED! NOTE OUR NEW ADDRESS AND EMAIL Complete parts and repair service for ONLY Lionel postwar and prewar trains and accessories at reasonable rates by a long-time hobbyist. Arizona Toy Train Repair, 1771 Knowlton Street, Sierra Vista, AZ 85635. Phone: 602-369-5938, Email: aztrainrepair@yahoo.com New website: www.arizonatoytrainrepair.com. All my information is on the website. Lifetime guarantee on repairs, \$75.00/hr.

THE TRAIN STATION – Mountain Lakes, NJ. Top 10 Authorized Lionel and AF Sales and Service since 1974. New, Used, Bought, Sold, Repaired. 973-263-1979 www.train-station.com.

FOR SALE: RAILRAX: Used RailRax O gauge 6' sections \$10 each – **Only 20 left!** - MTH 50-1004 AIU New in Box \$75 - Division can do credit card for purchase and bring to meet for pickup. Contact Chris for details

FOR SALE: Lionel 38071 SP Cab Forward 4-8-8-4 Brand new, never run \$750. Lionel 51008 Burlington Pioneer Zephyr brand new, never run \$900. Lionel 38014 D&RG Challenger 4-6-6-4 OB \$750. Lionel Prewar STD Gauge #10 set, Peacock, 332, 339, 341 cars. Individual boxes and set box \$325. Lionel Prewar STD Gauge #8 set, Red, 337, 338 cars plus transformer. Individual boxes and set box \$250. Lionel Santa Fe 2333-20 P X AB Diesel, battery compartment clean. Individual boxes and set box \$250. Chet Henry 480-532-3065 or bchenry@cox.net.

FOR SALE: TRACK SALE - New: Case of GarGraves phantom rail track, 50 sections OB, \$350 (retail \$635); case of Midwest cork roadbed, 25 pieces OB, \$50 (retail \$75). Can be shipped at actual shipping costs. Peter Atonna mjatonna@gmail.com

FOR SALE: TMK Lionel Prewar 0 & Standard 1900-43, Lionel Postwar 1945-69 TM Lionel 1970-89, 3-Rail price guide, Lionel 1901-95, Lionel 1970-1992, Lionel 1901-1997 each \$20, Greenberg's Repair & Operating Manual 736 pages \$30, Lionel Train Book 131 pages \$20, Hess Toy Truck & Racer 1997 \$15, Southern Crescent Limited 9530-34 new \$75, MDH Track Layout & Accessory Manual 64 pages \$20, MDH Operating 0&027 Trains 237 pages \$20. Dan Martin 520-360-0519 danniez@cox.net

FOR SALE: Lionel Model Builder magazine, complete run #1 thru #80 (1937-1949) plus the pre-release Sample Copy of Lionel Model Engineering. All with covers, no cut-outs; \$495 + S/H, or I'll bring to DD meet. Tim Halchuck, Fountain Hills, AZ. Cell 213-700-5455 or email tim@sound-sources.com

FOR SALE: MTH Premier 20-20340-1 DC-3 w/PS3 \$300, MTH MT-6019 UP Four Car aluminum passenger set \$100, MTH 20-6538 Five car ABS passenger set \$150 -- PayPal & credit cards - Chris Allen 480-820-9559 sparkyshome@cox.net

WANTED: for my collection. Lionel prewar and postwar engines in master cartons, scarce separate sale items such as Lionel scrapers, bulldozers, boxed autos, Lionel 6464-700 Santa Fe, -900 New York Central, -250 Western Pacific, -450 Great Northern boxcars in Type III body molds, mint freight cars in high grade original boxes, 6414 Autoloaders with autos in yellow, brown, or kelly green with grey bumpers, following cars in separate sale boxes: 6352 Culvert car, 6352-1 PFE icing car, 3460-25 Piggyback car, any rare Lionel items. Bill Sivley 281-804-3629 or mrwls911@yahoo.com

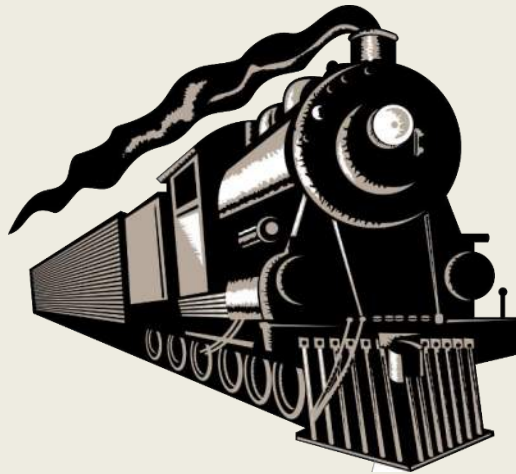
WANTED: VHS Tapes, Lionel - The Great Years 1955 & 1956 by Joe Algozzini/Don Varda (I have 1954) - Marx 51100 Southern Double Deck Auto Carrier or Flat Cars with trailers/tractors, Marx E-7's - Chris Allen 480-820-9559 sparkyshome@cox.net

This page is provided as a service to our members for trading among themselves on a space available basis. Contact them directly for items listed above. Contact Editor when your item sells so space can be made available to other members.

****DEADLINE FOR AD's – THIRD SATURDAY OF THE MONTH ****

TOY TRAIN AUCTION

TCA Desert Division presents - Souper Bowl IX
SATURDAY February 1st, 2025



300 Lots - 99% No Reserve

**** NO BUYERS PREMIUM! ****

Lionel – Ives – Bing - American Flyer

Marx - K Line – MTH – Atlas

**Operating accessories, Paper, Railroadiana,
Pre-War Collectibles & Post War to Modern era trains**

Paradise Valley United Methodist Church

Fellowship Hall

4455 E Lincoln Dr., Paradise Valley, AZ 85253

Preview 8:00 AM - Auction Starts promptly at 9:00 AM

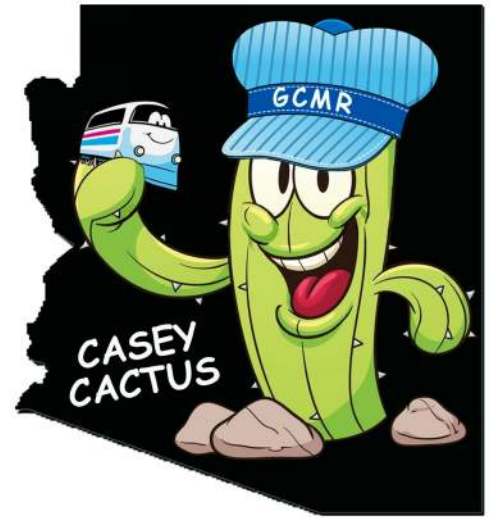
Admission \$5 includes printed catalog or preview online TCADD.ORG

**Lunch provided - Division members Soup and Chili cookoff
\$5 suggested donation for soup/chili + fixings plus drink and desert**

**"ONE OF ARIZONA'S LARGEST
MODEL RAILROAD SWAP MEETS"**
**CACTUS WINTER
TRAIN SWAP**

9:00 AM - 12:00 PM

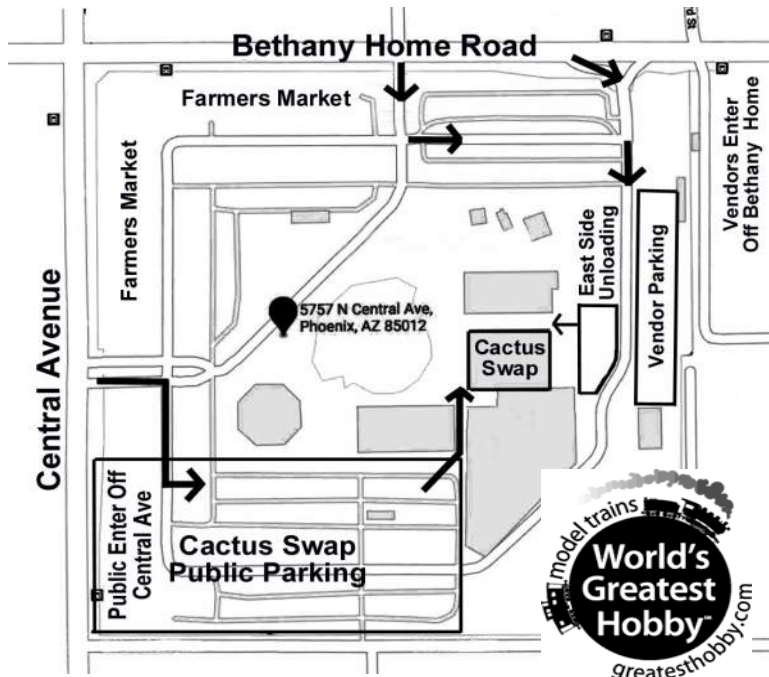
**\$6.00 admission per person
Children 16 and under free with adult**



SATURDAY, FEBRUARY 15th, 2025

Massive Outdoor Farmers Market at the same time!

**NORTH PHOENIX BAPTIST CHURCH
FELLOWSHIP CENTER**



**5757 North Central Avenue
Phoenix, AZ 85012**

(Central Ave entrance - park in the Southwest lot)

**Free Parking * Air Conditioned
A Family Affair * Food Available
Noon Table Top Auction * Test Track
Door Prizes * Fantastic Raffle**

**ALL SIZES AND
SCALES FOR SALE!**

**Presented by your pal Casey Cactus and the
GRAND CANYON MODEL
RAILROADERS**

Visit us at www.gcmrr.org

email: info@gcmrr.org



CACTUS WINTER TRAIN SWAP
Saturday, February 15, 2025 9:00 AM – 12:00 PM
**This coupon good for \$1.00 off
your \$6.00 cost of admission**
Children 16 and under free with adult
One coupon per person



TCA Rio Grande Chapter
Invites you to a
TOY TRAIN SWAP MEET

BUY * SELL * SWAP
Trains, scenery, track, collector's items from Lionel, American Flyer,
K-Line, MTH, Marx, Hallmark & other scales too.

Saturday, February 22, 2025

Doors open to the public 9am to 2pm

Open to TCA Members at 8am

Netherwood Park Church of Christ

5101 Indian School Road NE, Albuquerque, NM

\$3.00/person \$5.00/ family (TCA Members free)

(Children must be accompanied by an adult)

Raffle Drawing Every 30 Minutes (10:00 AM – 1:30PM)

Free ticket for every paying guest – must be present to win

See our Modular “O” Gauge Train Layout

SCHEDULE: Setup : Building opens at 7 am (Member Swap 8am to 9am) Meet Opens to Public: 9am< Meet closes 2pm

RESERVATIONS: Size 6' long tables, chairs provided. Tables reserved by submitting the form below with a check made out to TCA Rio Grande Chapter and mailed to the swap meet coordinator.

GENERAL GUIDELINES: Tables assigned by the Meet Coordinator and special requests treated on a first come first served basis; Electrical setup provided as requested. Vendors will please set up for the entire Swap Meet. We will do everything possible to make the event a pleasant experience for vendors as well as the general public.

Swap Meet Coordinator : Scott Eckstein 505-270-0516
10805 Snowheights Blvd NE, Albuquerque, NM 87112

NAME.....TCA##.....

ADDRESS.....

PHONE.....EMAIL.....

TCA MEMBER #TABLES.....@\$15.00EA.....

Non MEMBER #TABLES.....@\$20.00EA.....

I hereby agree to be bound by the rules of the TCA Train Meet in regards to buying, selling, ethics and behavior. In case of dispute the Meet Coordinator shall arbitrate the dispute.

Signed.....